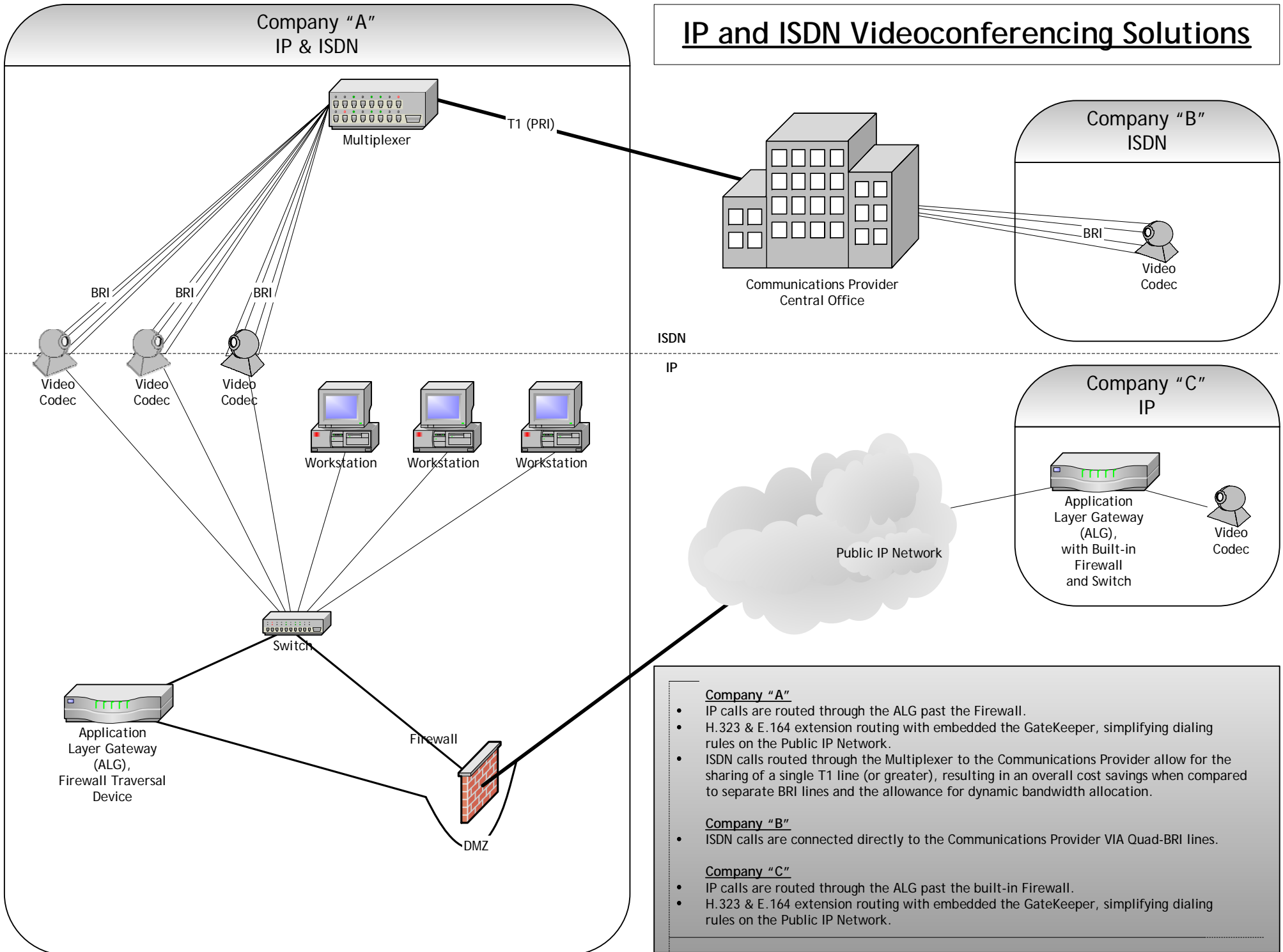


# IP and ISDN Videoconferencing Solutions



## Company "A"

- IP calls are routed through the ALG past the Firewall.
- H.323 & E.164 extension routing with embedded the GateKeeper, simplifying dialing rules on the Public IP Network.
- ISDN calls routed through the Multiplexer to the Communications Provider allow for the sharing of a single T1 line (or greater), resulting in an overall cost savings when compared to separate BRI lines and the allowance for dynamic bandwidth allocation.

## Company "B"

- ISDN calls are connected directly to the Communications Provider VIA Quad-BRI lines.

## Company "C"

- IP calls are routed through the ALG past the built-in Firewall.
- H.323 & E.164 extension routing with embedded the GateKeeper, simplifying dialing rules on the Public IP Network.